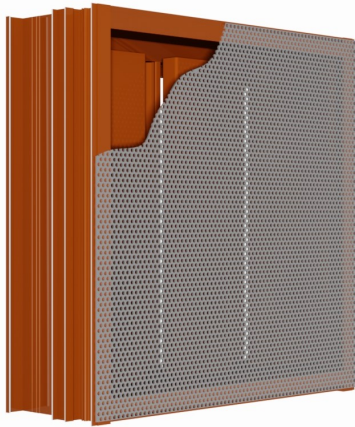


Model—SA-440E-PF

6" (152mm) DEEP PERFORATED HORIZONTAL FIXED BLADE LOUVER



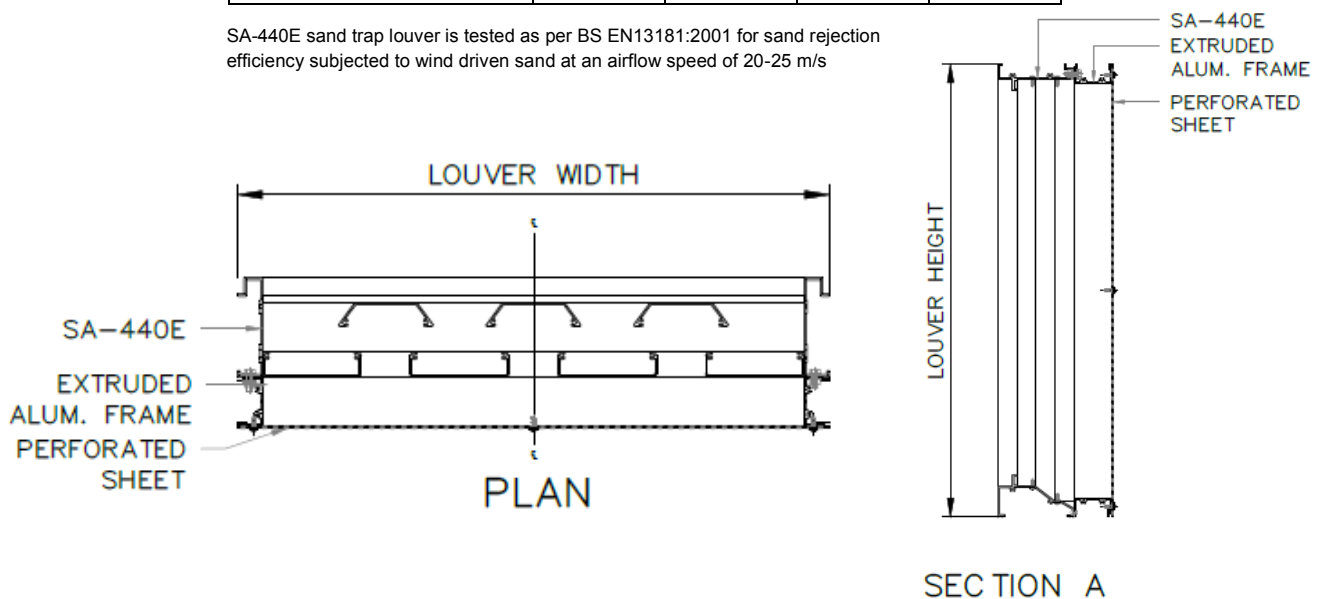
AIRFLOW PERFORMANCE:

- Free Area: 28.6%
- Airflow Classification—Class 3
- Static Pressure Loss: Not more than (16 Pa) @ (2.6 m/s) Free Area Velocity

SAND REJECTION Performance:

SAND GRADE	SAND REJECTION EFFICIENCY % @ Core Velocity (m/s)			
	0.5 m/s	1.0 m/s	1.3 m/s	2.0 m/s
1 - 699 microns (Standard)	88%	62%	35%	5%
355 - 425 microns (Coarse)	95%	90%	76%	20%

SA-440E sand trap louver is tested as per BS EN13181:2001 for sand rejection efficiency subjected to wind driven sand at an airflow speed of 20-25 m/s



System Description:

OSA Perforated high performance series; extruded aluminum construction; frame with channel profile; corner joints mitered and mechanically fastened, with continuous recessed caulking channel each side; capable of long vertical spans, tested for sand rejection as per BS EN 13181:2001 standards & for air performance.

Material & Finishes:

1. SA-440E-PF comprises 2-rows of 100mm wide vertical sand trap blades in 101.6mm deep extruded aluminum frames. A galvanized steel option is also available.
 - a. Blades: Vertical—Sand trap
 - b. Frame depth: 101.6mm deep
 - c. Facing: Aluminium Perforated sheet
2. Metal Thickness: Frame 2mm; blades (1.6mm—2mm) options are available.
3. Finish: PE-SDF / PVDF / Anodize after fabrication
4. Color: As scheduled.
5. Mullions: Exposed
6. Screens: Bird mesh / Insect mesh
7. Screen location: Interior
8. Screening Material: Aluminum / Stainless Steel

Louver Construction:

1. Wind Load Resistance: Design to resist +ve and -ve wind load of ___ psf (___ kPa) without damage or permanent deformation.
2. Blades: One piece extrusions with reinforcing bosses, supported and lined up with heavy-gage extruded aluminum blade braces, positively interlocked to each blade and mechanically secured to structure by aluminum and stainless steel fastenings.
3. Exposed edges and ends of metal dressed smooth, free from sharp edges.
4. Exposed connections and joints constructed to exclude water.

Warranty:

OSA louvers warranted for 5 years against defective material and workmanship, and 20 Years for Finishes.

Model—SA-440E-PF

6" (152mm) DEEP PERFORATED HORIZONTAL FIXED BLADE LOUVER



FREE AREA CALCULATIONS IN FT² And M² Louver Height in Inches and Meters

		18	24	30	36	42	48	54	60	66	72	78	84	90	96
		0.46	0.61	0.76	0.91	1.07	1.22	1.37	1.52	1.68	1.83	1.98	2.13	2.29	2.44
Louver Width in Inches and Meters	18	0.45	0.67	0.89	1.12	1.34	1.57	1.79	2.01	2.23	2.35	2.56	2.79	3.01	3.24
	0.46	0.04	0.06	0.08	0.10	0.12	0.15	0.17	0.19	0.21	0.22	0.24	0.26	0.28	0.30
	24	0.67	1.01	1.34	1.45	1.90	2.23	2.56	2.68	3.12	3.46	3.80	4.02	4.35	4.69
	0.61	0.06	0.09	0.12	0.13	0.18	0.21	0.24	0.25	0.29	0.32	0.35	0.37	0.40	0.44
	30	0.89	1.22	1.57	1.90	2.35	2.79	3.12	3.57	3.90	4.35	4.69	5.14	5.47	5.92
	0.76	0.08	0.11	0.15	0.18	0.22	0.26	0.29	0.33	0.36	0.40	0.44	0.48	0.51	0.55
	36	1.12	1.56	2.01	2.45	2.91	3.35	3.90	4.35	4.80	5.24	5.81	6.25	6.58	7.03
	0.91	0.10	0.15	0.19	0.23	0.27	0.31	0.36	0.40	0.45	0.49	0.54	0.58	0.61	0.65
	42	1.22	1.79	2.35	2.91	3.35	4.02	4.58	5.14	5.69	6.25	6.81	7.26	7.82	8.37
	1.07	0.11	0.17	0.22	0.27	0.31	0.37	0.43	0.48	0.53	0.58	0.63	0.67	0.73	0.78
	48	1.45	2.12	2.68	3.35	4.02	4.58	5.24	5.92	6.58	7.14	7.82	8.37	9.04	9.71
	1.22	0.13	0.20	0.25	0.31	0.37	0.43	0.49	0.55	0.61	0.66	0.73	0.78	0.84	0.90
	54	1.67	2.23	3.01	3.80	4.46	5.24	6.03	6.70	7.37	8.03	8.82	9.60	10.27	11.04
	1.37	0.16	0.21	0.28	0.35	0.42	0.49	0.56	0.62	0.69	0.75	0.82	0.89	0.95	1.03
	60	1.90	2.68	3.35	4.25	5.02	5.92	6.70	7.37	8.26	9.04	9.93	10.71	11.39	12.28
	1.52	0.18	0.25	0.31	0.39	0.47	0.55	0.62	0.69	0.77	0.84	0.92	1.00	1.06	1.14
66	2.01	2.90	3.80	4.69	5.58	6.48	7.37	8.26	9.16	9.93	10.94	11.72	12.61	13.62	
1.68	0.19	0.27	0.35	0.44	0.52	0.60	0.69	0.77	0.85	0.92	1.02	1.09	1.17	1.27	
72	2.23	3.12	4.13	5.36	6.13	7.14	8.14	9.04	10.05	10.94	11.83	12.83	13.84	14.84	
1.83	0.21	0.29	0.38	0.50	0.57	0.66	0.76	0.84	0.93	1.02	1.10	1.19	1.29	1.38	
78	2.35	3.46	4.46	5.58	6.70	7.70	8.81	9.82	10.94	11.83	12.94	14.06	15.06	16.07	
1.98	0.22	0.32	0.42	0.52	0.62	0.72	0.82	0.91	1.02	1.10	1.20	1.31	1.40	1.49	
84	2.56	3.68	4.91	6.03	7.26	8.37	9.60	10.60	11.63	12.83	13.95	15.18	16.18	17.41	
2.13	0.24	0.34	0.46	0.56	0.67	0.78	0.89	0.99	1.08	1.19	1.30	1.41	1.51	1.62	
90	2.79	4.02	5.24	6.48	7.70	9.04	10.27	11.39	12.50	13.84	15.06	16.18	17.41	18.75	
2.29	0.26	0.37	0.49	0.60	0.72	0.84	0.95	1.06	1.16	1.29	1.40	1.51	1.62	1.74	
96	3.01	4.24	5.58	6.92	8.26	9.60	10.94	12.05	13.39	14.73	15.95	17.29	18.75	19.98	
2.44	0.28	0.39	0.52	0.64	0.77	0.89	1.02	1.12	1.25	1.37	1.48	1.61	1.74	1.86	

